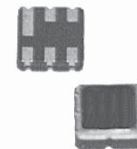


# SMD 418.0MHz SAW FILTER

AFS418S3

**APPLICATION:** Automotive Electronics/Remote Control



3.8 x 3.8 x 1.5mm

## STANDARD SPECIFICATIONS:

CHARACTERISTICS	UNIT	MIN.	TYP.	MAX.
Center Frequency Fc	MHz	-	418	-
Bandwidth	MHz	-	Fc + 2.0	-
Insertion Loss @ Passband	dB	-	-	4.5
Ripple @ Passband	dB	-	-	2
Relative Attenuation				
Fc-100 ~ Fc-40.8 MHz	dB	55		-
Fc+40.8 ~ Fc+100 MHz	dB	55		-
DC Voltage	V	10		
Source Power	dBm	0		
Operating Temperature	°C	-10°C to +50°C		
Storage Temperature	°C	-45°C to +85°C		
Terminating Impedance	-	150Ω/0 pF		

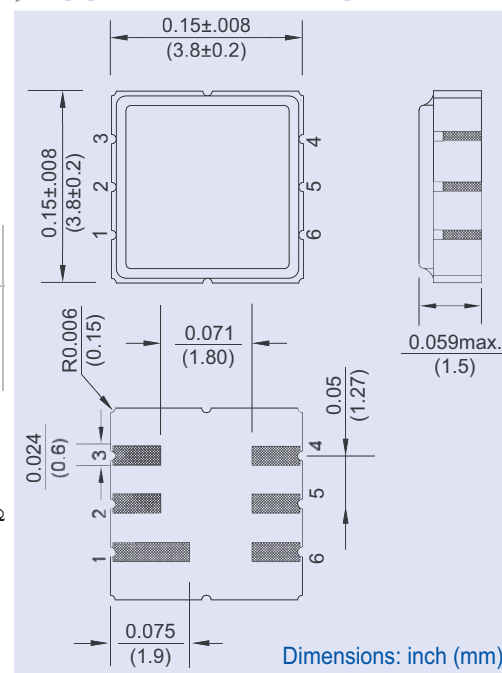
Electrostatic Sensitive Device. Handle with precaution.

## MARKING:

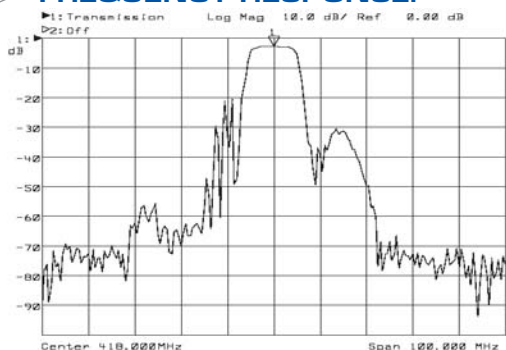
- 418.00 (418.0 Frequency in MHz)
- AF ZYX (ZY: Date code Z for month from A to L; Y for year, i.e. 4 for 2004  
X: Traceability code)

PIN NO.	CONNECTIONS
2	Input
5	Output
All Others	Ground

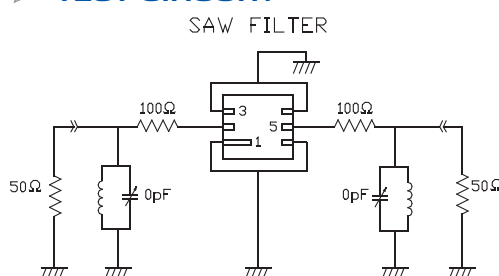
## OUTLINE DRAWING:



## FREQUENCY RESPONSE:



## TEST CIRCUIT:



Please refer to ABRACON's Chip Inductor Series AISC-0603 for Test Inductors